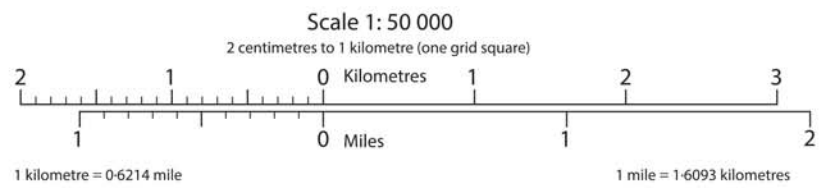
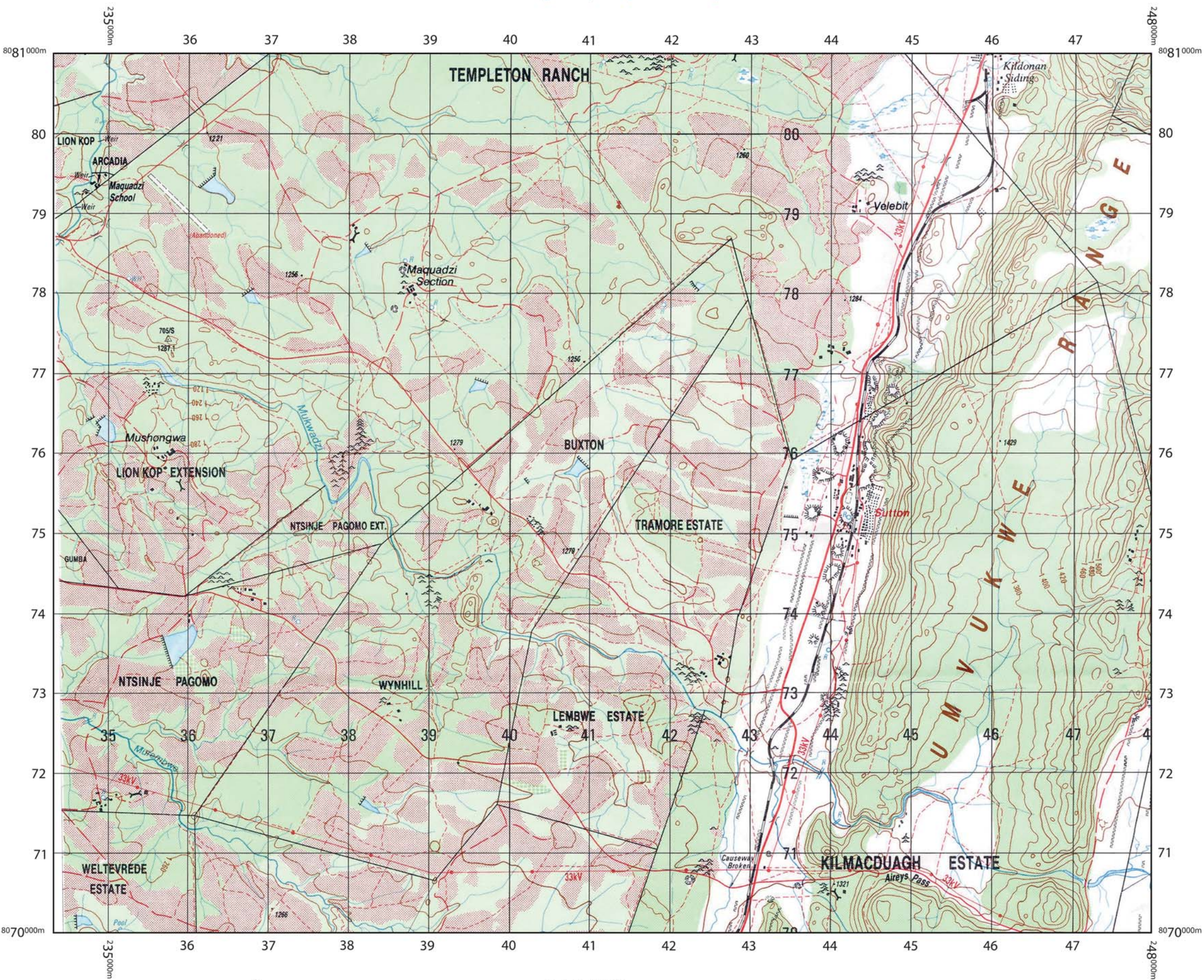


## **Survey Map**

Please be aware, that in order to preserve the scale the map, if printed, should be printed in colour onto A3 paper.



Four colours should appear above; if not then please return to the invigilator.  
Four colours should appear above; if not then please return to the invigilator.



Scale 1: 50 000

2 centimetres to 1 kilometre (one grid square)

2 1 0 Kilometres 1 2 3  
1 0 Miles 1 2

1 kilometre = 0.6214 mile

1 mile = 1.6093 kilometres

# Umvukwe Range (Zimbabwe)

City, Town	<b>HARARE</b> , <b>BINDURA</b>
Village, Business Centre	<b>MBERENGWA</b> , <b>FENGA B.C.</b>
Boundary, International	
" Cadastral, Original Grant	
" " Subdivision	
Road, Wide Tarred	
" Narrow, Tarred	
" Gravel or Earth Bridge	
" other	
Track, Cut Line or Game Trail	
Aerodrome Landing Area	
Railway, with Embankment, Cutting, Tunnel	
Mast	
Trigonometrical Station and Height in metres to top of pillar	158/P 1 190,6
International Boundary Beacon, Magnetic Station	▲ BB50A
Unmarked Spot Height: Ground Survey, Photogrammetric	.1 272 .1 173
Power Line, 33kV and above, approximate alignment	
Huts, Staff Quarters	
Built-up Area, Buildings	
Church	
Dip Tank	
Hill name	<b>DOMBOSHAWA</b>
Mine Name	<b>Copper Queen</b>
National Monument or Place of Historical Interest	
Police Station, Post Office, Post and Telegraph Agency	PS PO PTA
District Administration Office	DAO
River, Watercourse	
Dam	
Lake	
Pan: Small, Large: Waterhole	
Rapid, Waterfall	
Well, Spring, Borehole, Windpump, Reservoir	
Furrow, Pipeline	
Seasonal Marsh	
Contours at 20 metre Vertical Interval, with Cliff Feature	
Depression, Sand	
Isolated Hill Feature that does not take a contour	
Cultivation	
Smooth Rock	
Mining or Prospecting Trench, Mine Dump, Quarry or Excavation	
Very Dense Bush, Dense Bush	
Medium Bush	
Sparse Bush, Open Grassland	
Orchard or Plantation	



Map and Legend scanned from previously printed copy.  
 Quality will not match mapping printed directly from source data.  
 Published by the Surveyor-General, Zimbabwe 1982.  
 Copyright reserved by the Government of Zimbabwe.  
 Extract produced by Ordnance Survey 2014.  
 All rights reserved.